

Diocese of Killaloe



KILMALEY-CONNOLLY-INCH PARISH



Críocha Callan Pastoral area

PP: Fr. John McGovern 065-6839735. Fr. Donagh O' Meara Mullagh & Miltown Malbay 087-2322140 Fr. Martin Shanahan, Inagh 087-7486935

IBAN numbers for personal banking donations: Parish Current Account: IE09 BOFI 9042 1030 1660 28 Priests' Salary Account: IE56 BOFI 9042 1073 5476 56.

Mass times ~ Kilmaley: Saturday 7.30pm, Thursday and Friday 10am. Connolly: Sunday 10.30am, Monday and Tuesday 10am. Inch: Sunday 9.15am, Wednesday at 8pm

THE PARISH OFFICE IS TEMPORARILY CLOSED.

For all Parish business please contact Fr John on 065 68 39735 or email kilmaleyparish@gmail.com. Website: www.kilmaleyparish.ie

MASS CARDS:

For your convenience, mass cards are now available for sale in **all three churches** in the parish.



MASS INTENTIONS THIS WEEK:

ANNIVERSARY MASSES can be booked at 065 68 39735 or email kilmaleyparish@gmail.com.

KILMALEY—SATURDAY AT 7.30PM:

- 20thJun *Recently deceased*
Declan Thomas O Sullivan England.
- 27thJun **Bridie Cahill**, Knockatunna.
Maura and Martin Connellan, Lisroe
Patrick and Mary McMahan, Kilcolumb.
Paddy and Tony McMahan, Kilcolumb.
Peggy and John Lynch, Shean.

INCH—SUNDAY AT 9.15AM:

21st & 28thJun No intention booked

CONNOLLY - SUNDAY AT 10.30AM:

- 21stJun **Michael and Maureen Moloney** Renagisha and their son **Michael**, Shannon.
Noreen McGuane, Kinturk
Peter and Catherine Baker, Corrancreagh, their sons **Hugh and Anthony** and deceased members of the Baker and Crowley families.
- 28thJun No intention booked

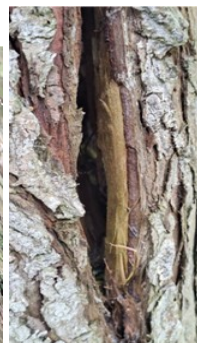
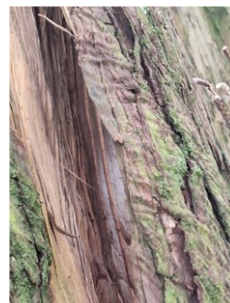
EUCCHARISTIC ADORATION continues on Tuesdays from 2 to 8pm in Kilmaley Church.



“When great trees fall, rocks on distant hills shudder...”

— Maya Angelou

Many parishioners will be saddened to learn that our beloved Monterey Cypress (Macrocarpa) tree beside the church in Kilmaley must be removed in the coming days for safety reasons. For more than 150 years, this magnificent tree has been a cherished feature of our churchyard and a silent witness to generations of family celebrations. It has provided the backdrop for countless photographs marking weddings, baptisms, First Holy Communion and Confirmations, creating treasured memories for so many families. Recent inspections have revealed significant structural failure within the tree. Large cracks have developed where its two massive trunks meet, and these splits continue to widen. Following assessments by several independent experts, we have been advised that the tree has become unstable and presents a serious risk to both people and property. Unfortunately, there is no safe alternative but to remove it. We share the community's sense of loss, but the safety of all who visit our church must remain our first priority.



BASKET & ENVELOPE COLLECTIONS:

- Weekly & Holy Day Envelopes** €500
- Priest's Collection** €1,143
- Major Repair Fund** €397 ~~€61,699~~ to date!

Sincere thanks for your generosity! Contributions, can also be dropped into the Parochial House or the **“mass card donation boxes”** or online using the DONATE button on Kilmaley Parish Website or the IBAN numbers.

Grow Mental Health Friendly Community based peer support groups people experiencing mental health concerns through connection, hope, identity by empowering them to nurture their positive wellbeing and personal growth. Meetings at Maria Assumpta Hall. Mon 7.30pm/Tue 2pm. Call Celia 086-1526966/www.grow.ie
Killaloe and Ferns Diocesan Pilgrimage to Knock Shrine, takes place on Sunday 5th July 2026. This annual pilgrimage offers a sacred opportunity for our entire diocesan family to come together in prayer, reflection, and community. Whether you seek personal renewal, wish to pray for loved ones, or simply want to experience the deep peace of Ireland's National Marian and Eucharistic Shrine, your presence will greatly enrich our pilgrimage. **Bus Organisers contact details:** Brigdale Coaches contact 086-8034092 or email info@brigdalecoaches.com. (preferable) to book a seat. Bus leaves St. Joseph's church, Ennis at 9.30am.

Notices for Newsletter can be sent by email to kilmaleyparish@gmail.com or drop them in the letterbox at Kilmaley presbytery by **1.00pm on Wednesday**. We include notices for parish and church related events. Where space permits we also include notices for local not-for-profit groups.